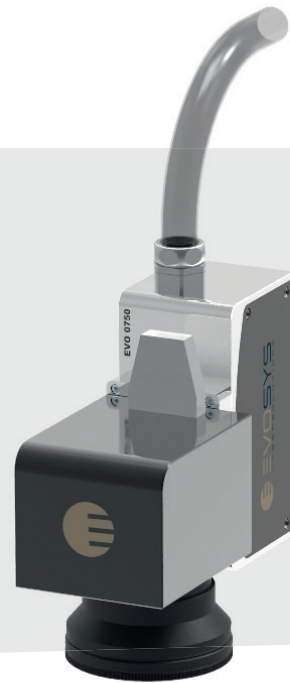


EVO 0750

Laser module quasi-simultaneous welding

- ▶ Customized laser optics
- ▶ Software for laser plastic welding
- ▶ Small footprint
- ▶ Process-reliable machining



The **EVO 0750** is a compact laser module with tailor-made optical configuration for contour or quasi-simultaneous welding of plastics.

The robust welding head is optimized for integration into an automation environment. Control options via common fieldbus systems enable efficient project planning and flexible use in production.

The laser module can be equipped and expanded with different configurations for laser plastic welding.

The quality of the weld is ensured by various additional modules. For example by means of a high precision collapse control measuring system and other online monitoring modules.

During setup, each **EVO 0750** passes through the unique CQC calibration concept from Evosys Laser GmbH, which ensures the comparability of the systems.

Technical data

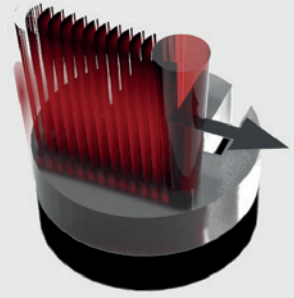
Laser class	4						
Laser wavelength	980 nm (others on request)						
Laser power	up to 400 W						
Laser spot	2.5 mm (others on request)						
Integrated pilot laser	Yes						
Operating distance	400 mm (others on request)						
Working field	300 mm x 300 mm (others on request)						
Power supply	115 V - 230 V / 50-60 Hz / 2 kW						
Configuration	<ul style="list-style-type: none"> ✓ Fully integrable laser module ✓ Interfaces for communication and data exchange ✓ EVOSYS industrial control 						
On demand	<ul style="list-style-type: none"> ✓ Visualization on touch panel ✓ Pyrometer ✓ NGO special optics ✓ Remote maintenance module 						
Dimensions (WxHxD) and weights	<table border="0"> <tr> <td>Welding head</td> <td>120 x 280 x 270 mm</td> <td>/ 6 kg</td> </tr> <tr> <td>Control/switch cabinet</td> <td>600 x 1.200 x 500 mm</td> <td>/ 120 kg</td> </tr> </table>	Welding head	120 x 280 x 270 mm	/ 6 kg	Control/switch cabinet	600 x 1.200 x 500 mm	/ 120 kg
Welding head	120 x 280 x 270 mm	/ 6 kg					
Control/switch cabinet	600 x 1.200 x 500 mm	/ 120 kg					



CONSUMER



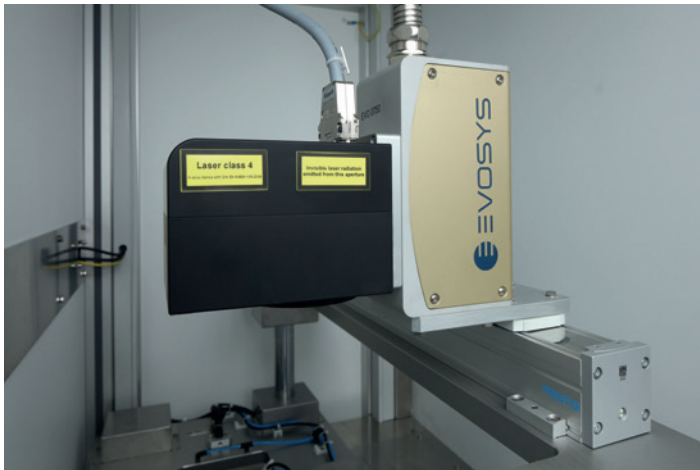
AUTOMOTIVE



LASER WELDING

Layout description

The **EVO 0750** is a flexible, integrable laser module. Thanks to its space-saving design, it fits into almost any production environment. All components such as laser, control and power supply unit are integrated in the control cabinet or the plug-in module.



Integration example:
Laser module EVO 0750 on linear axis to process two nests with one laser module.



Evosys Process Cockpit:
All important process data at a glance.
Easy operation of the Evosys HMI.

EVOSYS is the ideal partner for laser welding of plastics. Whether a simple off the shelf machine or complex customized systems, we will convert your challenges into solutions.

CONTACT

Evosys Laser GmbH
www.evosys-group.com

Technical data are subject to change.

Version: 09/22/23

We are the specialists when it comes to bringing the latest optical technology into your production!

