

EVO 0550

The laser module with fixed optics

- ▶ Highest economic efficiency
- ▶ Small footprint
- ▶ Highest quality of production
- ▶ Easy integration



The **EVO 0550** is a fixed-focus, compact laser module for welding plastics. The welding head has been optimised for integration into an automation environment.

The robust design and a control option via common fieldbus systems enable efficient project planning and flexible use in production.

The laser module can be equipped with different configurations and optics. The quality of the weld can be ensured by various online monitoring modules, such as temperature monitoring with pyrometer.

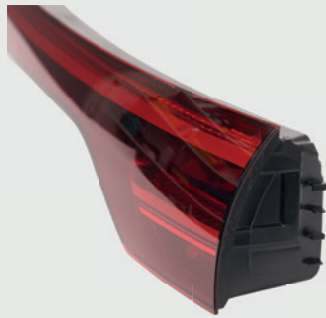
The **EVO 0550** goes through the unique CQC calibration concept of Evosys Laser GmbH, which ensures the comparability of the systems.

Technical data

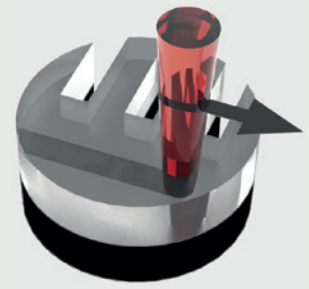
Laser class	4									
Laser wavelength	980 nm									
Laser power	up to 400 W									
Laser spot	4 mm									
Integrated pilot laser	Yes									
Operating distance	250 mm (further on request)									
Power supply	115 V - 230 V / 50-60 Hz / 1,5 kW									
Configuration	<ul style="list-style-type: none"> ✓ Fully integrable laser module ✓ Interfaces for data exchange ✓ EVOSYS Industrial control 									
On demand	<ul style="list-style-type: none"> ✓ Visualisation on the touch panel ✓ Control designed for expansion to up to 2 laser modules ✓ Temperature control ✓ NGO special optics ✓ Remote maintenance module 									
Dimensions (WxHxD) and weights	<table border="0"> <tbody> <tr> <td>Welding head</td> <td>60 x 170 x 175 mm</td> <td>/ 1,5 kg</td> </tr> <tr> <td>Control/switch cabinet</td> <td>600 x 1.200 x 500 mm</td> <td>/ 120 kg</td> </tr> <tr> <td>Control/plug-in</td> <td>19" x 12 HE x 550 mm</td> <td>/ 40 kg</td> </tr> </tbody> </table>	Welding head	60 x 170 x 175 mm	/ 1,5 kg	Control/switch cabinet	600 x 1.200 x 500 mm	/ 120 kg	Control/plug-in	19" x 12 HE x 550 mm	/ 40 kg
Welding head	60 x 170 x 175 mm	/ 1,5 kg								
Control/switch cabinet	600 x 1.200 x 500 mm	/ 120 kg								
Control/plug-in	19" x 12 HE x 550 mm	/ 40 kg								



MEDICAL



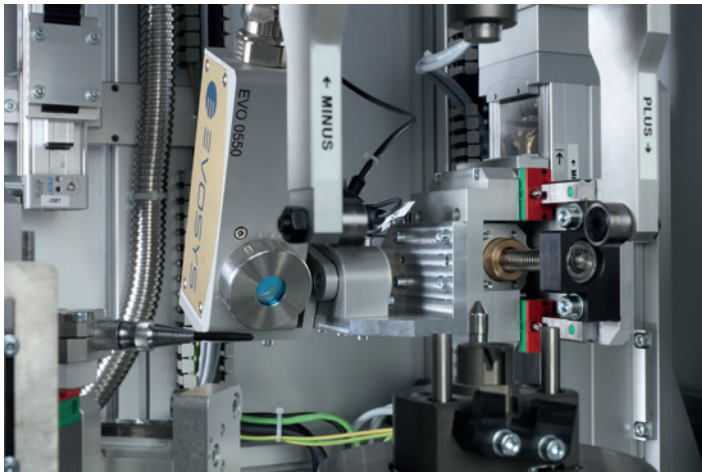
AUTOMOTIVE



LASER PLASTIC WELDING

Layout description

The **EVO 0550** is a flexible, integrable laser module. Thanks to its space-saving design, it fits into almost any production environment. All components, such as the laser, control and supply unit, are integrated in a control cabinet or the plug-in module.



Integration example: Laser module **EVO 0550** for radial welding



Easy operation with Evosys HMI

EVOSYS is the ideal partner for laser welding of plastics. Whether a simple off the shelf machine or complex customized systems, we will convert your challenges into solutions.

We are the specialists when it comes to bringing the latest optical technology into your production!

CONTACT

Evosys Laser GmbH
www.evosys-group.com



Technical data are subject to change.

Version: 09/22/23

